



**KEEPING YOU IN TOUCH!**

*Welcome to the November issue of the Old Woughton Parish Council Newsletter.*

**Woughton Parish Council – Change of Clerk**

Karen Hill has made the decision to leave us as clerk in order to focus on her other commitments. We would like to thank Karen for all her hard work and support during the early days of our parish and wish her all the best in her future roles.



We are pleased to announce that we have recruited Julian Vischer as our new clerk, please join us in welcoming him.

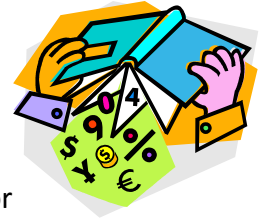
**Can you help the Parish establish Rights of Way?**

We are looking for residents who have been in the area for more than 10 years and have made use of the land and footpaths in the Parish for walking, informal sports or any other leisure activities.



If this is you and you can spare five to ten minutes to write us a statement about it then please get in touch with us as soon as you can. We will then send you the details of how to do this.

**Budget 2014-15**



It's the time of the year when we must decide on our budget and precept for the next financial year. Andrew, Stuart, and Ray Brown will present our draft spending plan at the next Parish Council meeting on 18th November.

We inherited a precept of £59.9k from Woughton Community Council when we were established 2 years ago. This year we set a conservative spending target of £26.6k as we were still 'learning the ropes'.

Gradually we are implementing rigorous financial controls and administrative efficiencies. We now feel we have a firm grip on expenditure and can set a balanced precept of around £11.4k for the year 2014-15. This would represent a precept level of about £28 for a Band D property. This and the draft budget will be discussed on the 18th November.

In the meantime we would like your views and suggestions on the level of the precept we should set, our spending policy and any ideas for projects that the Parish might fund. Contact any of your parish councillors or come along and speak up at the next meeting.

The draft budget will be published for consultation on our website from Friday 22nd November until 22nd December. It will then be given final approval in our January meeting when the precept will be set.

## Woughton Pavilion Community Asset Transfer

The process for MKC transferring this asset has now been through the first stage. Two organisations have bid to take it over:

- MK Leisure: a newly formed, wholly owned subsidiary of Hertsmeire Leisure, who currently run other facilities in Milton Keynes,
- MK Sports Educational Trust: the charity associated with the MK Dons football club.

Both parties presented very well thought out and thorough bids.

At this stage, the Parish Council has taken the decision that we are not in favour of the transfer going through in its current form. We don't feel there are sufficient safeguards in place to ensure that the land around the pavilion will remain undeveloped and available for residents to use for leisure activities as it currently is.

We have started to work with MK Council to see how these protections can be achieved. Unfortunately even if the facility remains with MK Council, they could still decide to sell it off at any point in the future, if they were so minded. It is important that we establish the right to use this land now, so it remains for future generations.



*Members of the  
Parish Council wish all  
Residents a Safe and  
Happy Christmas  
& New Year.*

## Parish Council Meetings (2013/2014):

**Monday 18<sup>th</sup> November 7.30pm** - St Mary's Church, Woughton-on-the-Green

**Monday 20<sup>th</sup> January 7.30pm** - St Mary's Church, Woughton-on-the-Green

**Monday 17<sup>th</sup> March 7.30pm** - St Mary's Church, Woughton-on-the-Green

**Monday 19<sup>th</sup> May 7.30pm** - St Mary's Church, Woughton-on-the-Green

**Please Note** - the meetings are held every other month.

The first 15 minutes of each meeting is reserved for the public to address the Council with questions or issues you wish to bring to our attention.

## How to contact us:

- Email us through the clerk:  
clerk@oldwoughton.org.uk  
Telephone: Landline: 01908 465811  
Mobile: 07706 709310
- Write to us:  
c/o Adams Lodge, 8 Baskerfield Grove,  
Woughton-on-the-Green, MK6 3EN
- Visit our website:  
▪ [www.oldwoughton.org.uk](http://www.oldwoughton.org.uk)

You can also email your Councillors individually:

[andrew.humphries@oldwoughton.org.uk](mailto:andrew.humphries@oldwoughton.org.uk)  
[stuart.bennett@oldwoughton.org.uk](mailto:stuart.bennett@oldwoughton.org.uk)  
[mike.blomley@oldwoughton.org.uk](mailto:mike.blomley@oldwoughton.org.uk)  
[judith.howson@oldwoughton.org.uk](mailto:judith.howson@oldwoughton.org.uk)  
[ray.brown@oldwoughton.org.uk](mailto:ray.brown@oldwoughton.org.uk)  
[peter.mcdonald@oldwoughton.org.uk](mailto:peter.mcdonald@oldwoughton.org.uk)  
[lorraine.king@oldwoughton.org.uk](mailto:lorraine.king@oldwoughton.org.uk)  
[roy.kenyon@oldwoughton.org.uk](mailto:roy.kenyon@oldwoughton.org.uk)

## Milton Keynes Council Contact Details:

By Phone: 01908 691691

By email: [info@milton-keynes.gov.uk](mailto:info@milton-keynes.gov.uk)

On the Web: [www.milton-keynes.gov.uk](http://www.milton-keynes.gov.uk)